

**SOUNDMASK®**

CREATING  
COMFORTABLE  
AND PRIVATE  
ACOUSTICS





UNIQUE TECHNOLOGY  
FOR COMFORTABLE  
SOUNDMASKING SERVICE



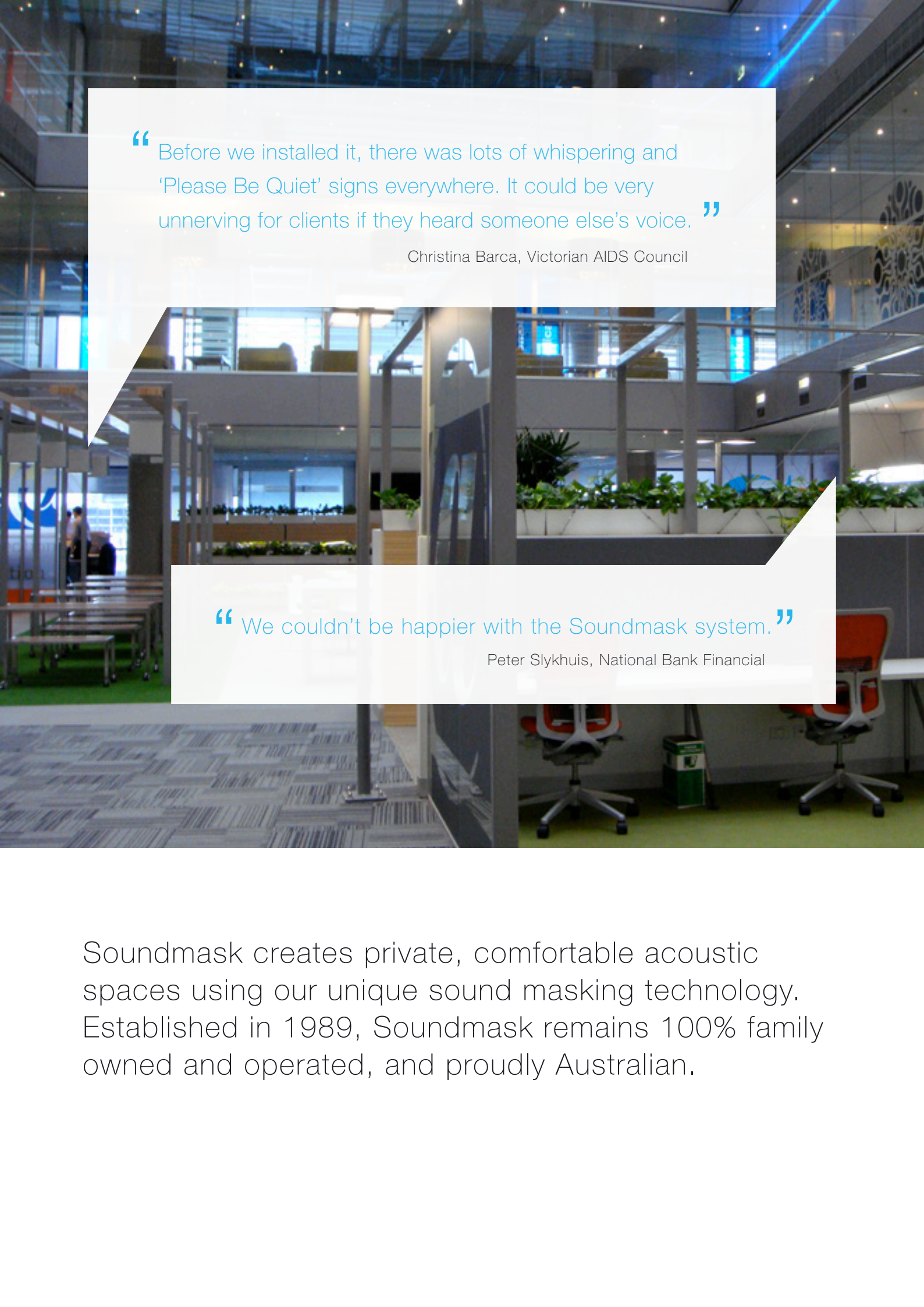
EASY TO RETROFIT  
OR INSTALL DURING  
CONSTRUCTION



LOW ENERGY, LOW COST  
AND GREEN



30 YEARS EXPERIENCE,  
QUALITY ASSURED



“ Before we installed it, there was lots of whispering and ‘Please Be Quiet’ signs everywhere. It could be very unnerving for clients if they heard someone else’s voice. ”

Christina Barca, Victorian AIDS Council

“ We couldn’t be happier with the Soundmask system. ”

Peter Slykhuis, National Bank Financial

Soundmask creates private, comfortable acoustic spaces using our unique sound masking technology. Established in 1989, Soundmask remains 100% family owned and operated, and proudly Australian.

# SOUNDMASK SYSTEM TYPES



## IN CEILING SYSTEM

The in ceiling system is the most commonly installed Soundmask system. Installed within existing suspended ceilings, or during construction, the system is concealed overhead.

## CASE STUDY PAROLE OFFICES

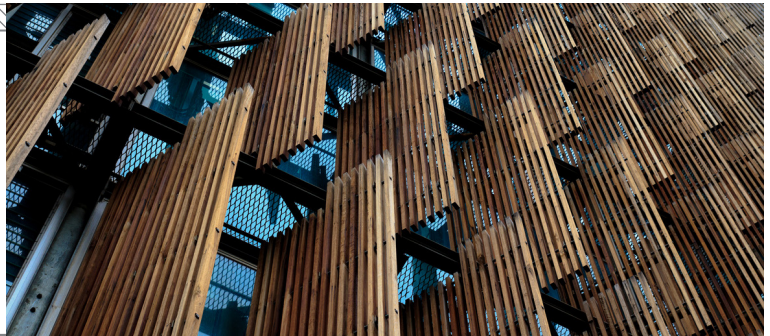
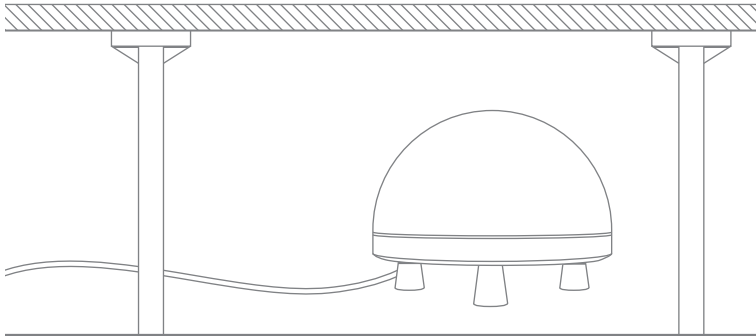
The Department of Justice and Regulation has parole office facilities throughout Victoria. These facilities have numerous interview rooms where parolees meet with their parole officers. During interviews, confidential conversations take place.

The Department specifies Soundmask's systems to create confidential environments for the interview rooms, waiting areas, program rooms and conference rooms throughout parole offices in Victoria.



“ It makes a real difference in the office space. Happy customer thus far. ”

Chris Richardson  
Forestry & Wood Products Australia



## UNDER FLOOR SYSTEM

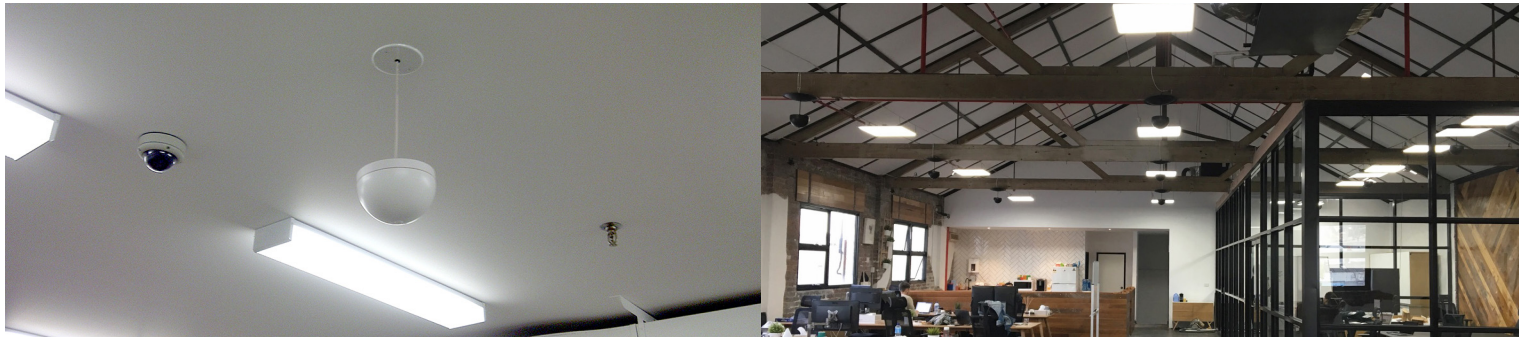
Under floor systems are used where there are no suspended ceilings (where a traditional system would be placed). The transducers are located under the floor with other services.

## CASE STUDY GREEN STAR OFFICE

The Council House 2 building, like other 6 Green Star rated buildings, required the addition of sound masking to correct the uncomfortably quiet office environment.

However, the innovative ceiling design also meant that the services, including Soundmask's system, needed to be installed under the Tasman Access floor. This floor was manufactured from steel and concrete composite. Soundmask's system achieved the correct penetration of sound via its powerful transducers.

# SOUNDMASK SYSTEM TYPES



## OPEN AREA SYSTEM

Open area systems offer the option of a Soundmask system where an under floor or ceiling system cannot be installed. For example, in lofted ceilings, like heritage buildings that have been re-fitted. There are also options for the Soundmask transducers to be suspended from the ceiling as a design feature.

## CASE STUDY WAREHOUSE FITOUT

Weploy's head office is a warehouse, retrofitted to integrate their minimalist design style. The boardroom and executive office, used to hold confidential meetings and discussions, is walled with glass and no ceilings: an aesthetically pleasing but indiscreet space.

Soundmask installed a system comprising a rack generator and transducers with our proprietary acoustic discs, filling the space with a non-intrusive masking sound. The result is speech privacy for the client without visual intrusion.

“ Many thanks to Soundmask Australia for their innovative help and advice in overcoming a problem in the provision of speech privacy. ”

Dr David Wylie  
Southport Anaesthetic Services



## SURFACE MOUNTED SYSTEM

Surface mounted systems are used where speakers cut into walls or ceilings are preferred.

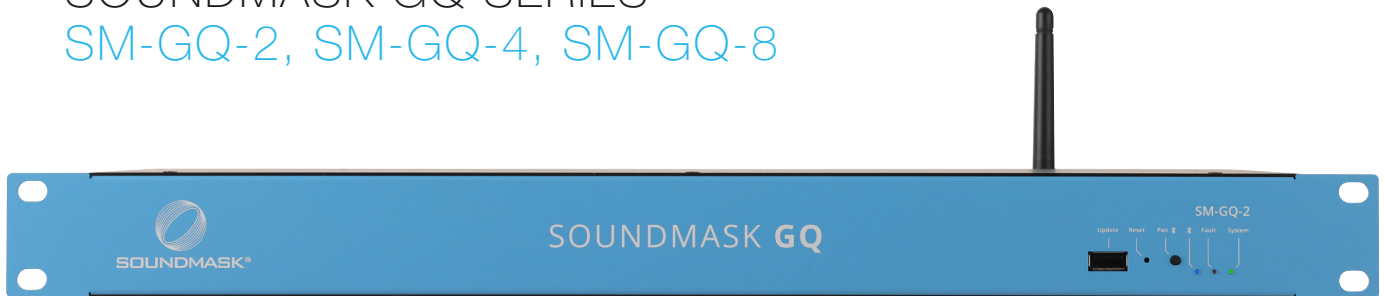
## CASE STUDY MEDICAL SUITES

Southport Anaesthetic Specialists is a small medical practice where a number of consultants and their secretaries share offices and an open plan reception area. Speech privacy was compromised whenever health information was gathered at the reception desk and via telephone.

Soundmask installed five “cut in” ceiling speakers and a shelf generator, solving the practice’s speech privacy problems and ensuring that the practise complies with Health Privacy legislation.

# SOUNDMASK PRODUCTS

## SOUNDMASK GQ SERIES SM-GQ-2, SM-GQ-4, SM-GQ-8



The Soundmask GQ is a random digital sound generator, 32 band digital EQ, 2, 4 or 8 zone distributor and amplifier that integrates seamlessly with existing transducers. The Soundmask GQ scheduling functionality includes a timer and ramp for ease of use.

The Soundmask GQ features Bluetooth® audio configuration and individual channel level control for each channel. Being digital, this unit is extremely efficient and delivers uncoloured signal direct to the transducer.

Each Soundmask GQ features stereo banana jack outputs which connect to the Soundmask transducers. These transducers then daisy chain in rows of up to 100 transducers per channel.

The Soundmask GQ8 replaces the existing SM-GR-3100, SM-EQ-2000, SM-DX-4800 and SM-DA-8000 combination, freeing up 3U rack space for each system.



“ The units are very artistic and add to the decor. ”

Theresa Schneider  
Nutritional Assessment Clinic

## RANDOM DIGITAL NOISE GENERATOR SM-GR-3100



Soundmask's SM-GR-3100 rack generator is the work horse of Soundmask's systems and features a microcontroller controlled digital random noise generator with an effective frequency range of 20Hz to 20kHz.

The digitally generated Gaussian noise is passed through a spectrum shaper to flatten its response through the midrange, corresponding to human speech frequencies. The rack generator services simple installations where no sound shape is required.

---

## ZONE DISTRIBUTOR SM-DR-5000



Soundmask's SM-DR-5000 zone distributor can be used where separate areas have different needs, but the client wants to spare the expense of mesh system.

The unit is a five channel volume control, each channel with separate attenuator. It is a single rack unit designed for convenient installation. Each channel has a maximum loading capability of 200 watts.

# SOUNDMASK PRODUCTS

## CEILING TRANSDUCERS SM-T-1200 & SM-T-1650

Suspended within the ceiling cavity, or exposed with Soundmask's proprietary acoustic disc (SM-TD-1300), the SM-T-1200 is easy to install and most frequently specified. The slightly larger SM-T-1650 features a 6.5" speaker.



## UNDER FLOOR TRANSDUCERS SM-T-2200 & SM-TU-1650

The SM-T-2200 and larger SM-TU-1650 transducers are designed for powerful penetration of access floors made from steel and concrete. The "feet" raise the transducers 35mm from the floor for an even spread of sound.



“ The design of the transducers makes installation so easy. ”

Roger Hughes, Authorised Installer

## ACOUSTIC DISC SM-TD-1300

Soundmask's proprietary acoustic disc is used with a transducer in an open area or where there are no reflective surfaces. Examples of use include green buildings where thermal or sound absorbent materials are applied to the underside soffit of the structural ceiling, and vaulted ceilings in warehouses or heri



## CUT IN TRANSDUCERS SM-T-1265 & SM-TC-1265

Soundmask's cut-in transducers are suitable where either or both suspended in-ceiling systems are not practical. The SM-TC-1265 is complete with a cover, the SM-T-1265 is designed without a cover to fit into small spaces.






## CONTACT

 [www.soundmask.com.au](http://www.soundmask.com.au)

 1300 734 168 (within Australia)

 [megan@soundmask.com.au](mailto:megan@soundmask.com.au)

 **Soundmask Global Pty Ltd**  
PO Box 4068  
Balwyn VIC 3103  
AUSTRALIA

© Copyright 2022 Soundmask Global Pty Ltd. All Rights Reserved. The Bluetooth® word mark and logos are registered trademarks owned by the BluetoothSIG, Inc. and any use of such marks by Soundmask Global is under license. Android is a trademark of Google LLC. Other trade marks and trade names are those of their respective owners.